

RR 00
MARION
SPROWLER

THOS. D. NEEL (158.70)
A-884
5-61

CYLLIN
SC

SCHUMANN ROAD

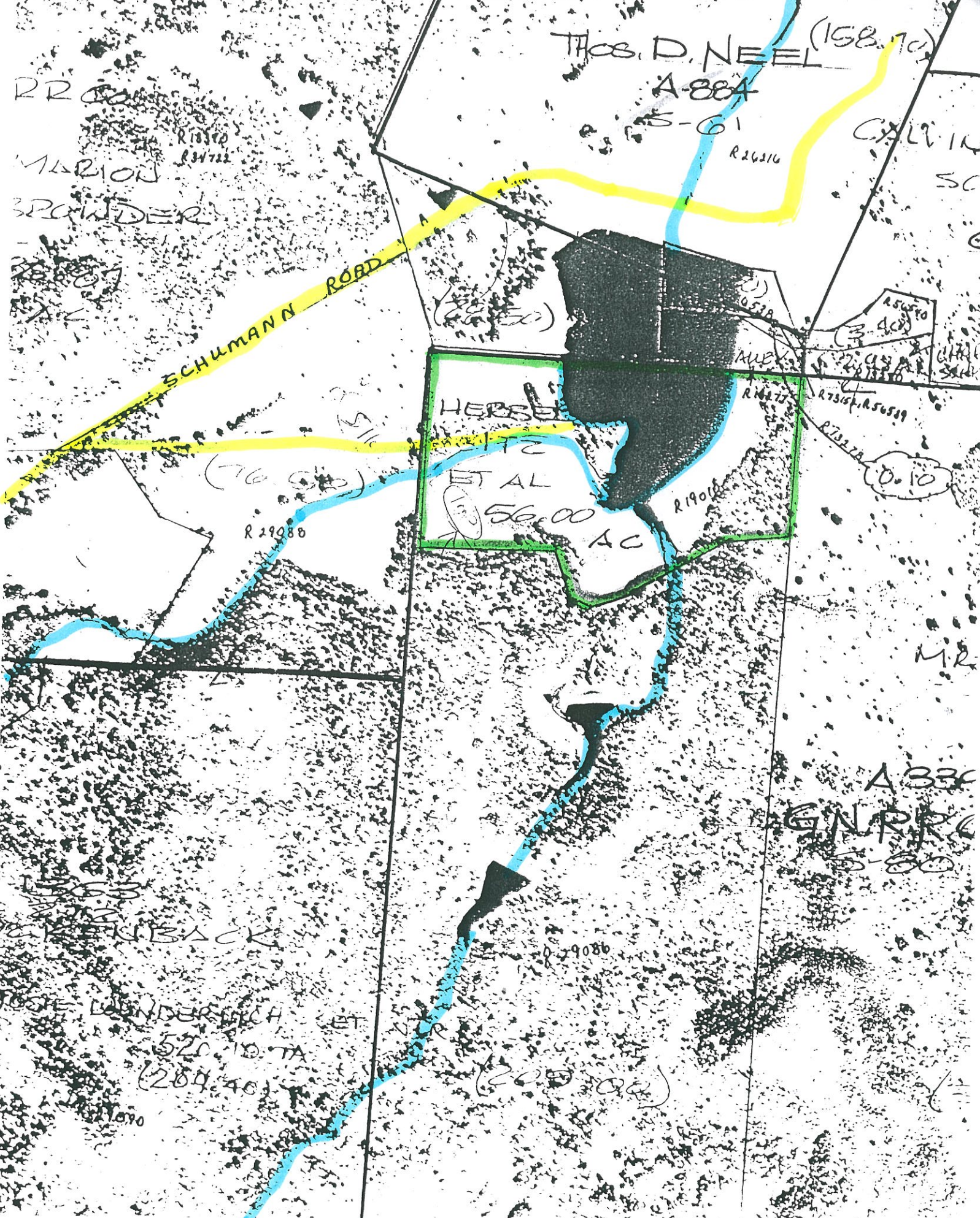
HERSE
ET AL
56.00 AC

A-336
GNRR
5-60

1863
KRENBACH

ROSE WUNDERLICH ET AL
520.10 TA
(264.40)

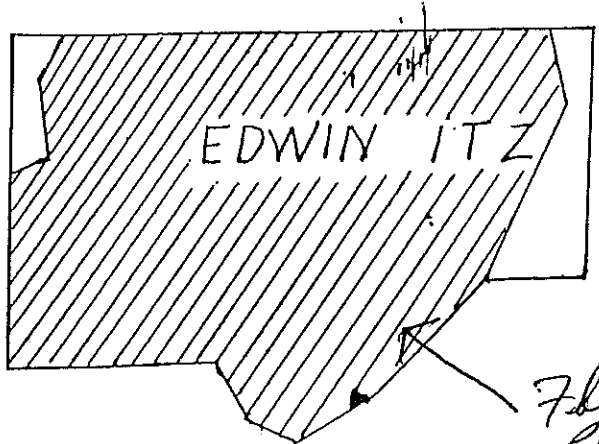
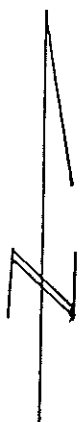
1870



this 23rd day of October, 1965.

(Seal)

B. H. Eckert
B. H. Eckert
Notary Public; Gillespie Count



*Flood
Plain Area*

Filed for record in my office the 16th day of December A.D. 1965 at 4:31 o'clock P.M.
recorded the 20th day of December A.D. 1965 at 10:40 o'clock A.M. in Volume 87, page

Felix Scherer, Clk. Co. Ct., Gillespie Count