

PIPE POST

S88°48'00"E 2552.2

1214.36

I.R.S.

540.64

FENCE 6.0'
NORTH OF
PROPERTY LINE

P.O.B.

FOR:
268.08 ACRES
TRACT

KERRY K. SCHNEIDER
(454.7 AC.)
VOL. 572, PG. 465
O.P.R.G.C.T.

3223.46'

2663.54'

N00°06'43"E

75.56
ACRES

2641.03'

N01°03'51"W

FOR:
1.04 ACRE
30' EASEMENT
TRACT

P.O.B.

4140.39'

N01°03'51"W

TOT
RUE

FOR 32.30
ACRE
TRACTS

P.O.B.

N89°53'18"W 1268.35'

I.R.S.

I.R.S.

I.R.S.

S89°53'18"E 30.01'

32.30
ACRES

S89°55'08"E
1001.53'

S89°55'08"E
567.12'

I.R.F.

I.R.S.

8" CEDAR
POST FOUND

32.30
ACRES

APPROXIMATE LOCATION
OF PIPELINE

30' ACCESS
EASEMENT

1507.62'

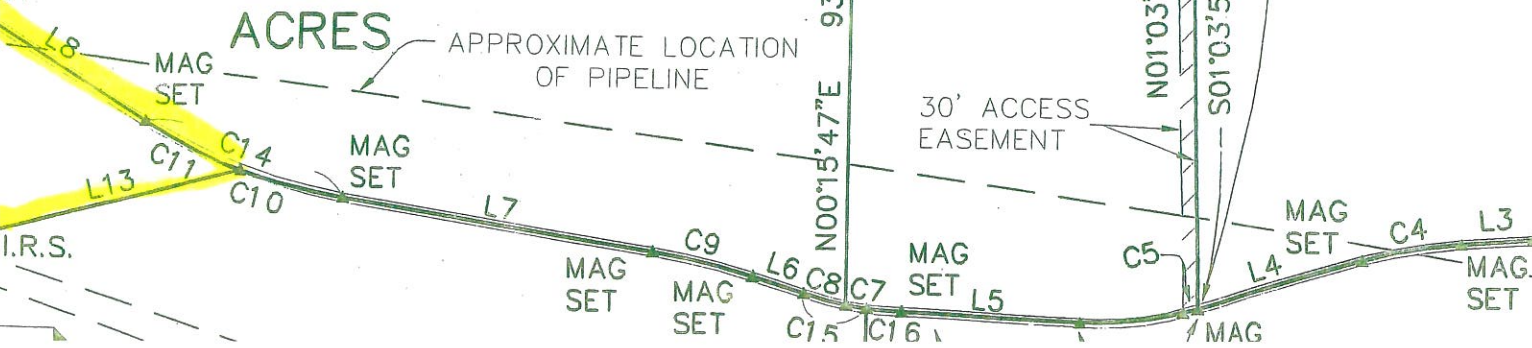
1499.36'

N01°03'51"W

S01°03'51"E

N00°15'47"E 937.82'

AG
ET



I.R.S.

MAG
SET

MAG
SET

MAG
SET

MAG

MAG
SET

MAG
SET