

DETAIL SCALE 1"=200'

FOR:
1.04 ACI
30' EASI
TRACT

P.O.B.

FOR 32.30
ACRE
TRACTS

P.O.B.

.08 ACRE
CESS &
SMNT.,
3 AC.
S ESMNT.

P.O.B.

ND
TE

5.59'

30'

SURVEY LINE FOR
ILLUSTRATION ONLY

N00°06'4"

N89°53'18"W 1268.35'

I.R.S.

S89°53'18"E 30

32.30
ACRES

S89°55'08"E
567.12'

S89°55'08"E
1001.53'

N86°37'13"E
828.67'

I.R.F.

I.R.F.

I.R.S.

8" CEDAR
POST FOUND

32.30
ACRES

APPROXIMATE LOCATION
OF PIPELINE

9.08
ACRES

30' ACCES
EASEMENT

N71°14'03"W
630.39'

MAG
SET

50.00
ACRES

P.O.B.

FOR 50.00
ACRES

MAG
SET

MAG
SET

MAG
SET

KE

APPR

I.R.S.

106.17
ACRES

JESSES AND SONS
SURVEY NO. 692
PROJECT NO. 458

FENCE 7.3' SOUTHE/
OF PROPERTY LINE

S42°08'23"W
237.20'

S53°40'23"W
185.90'

S66°31'23"W
167.80'

I.R.S.

I.R

S04°33'51"W 1681.28'

N04°33'51"E 1899.15'

S74°32'29"W

I.R.S. 567

N44°36'1"

217.87'

N89°43'48"W 1268.55'

N89°10'52"W 809.66'

I.R.S.

I.R.S.

8" CEDAR
POST

N00°30'02"W 916.03'

N00°04'58"W
1021.42'

N00°01'27"W 1226.32'

N00°15'47"E 937.82'

S00°15'47"W 795.17'

L11

L12

L17

L18

L19

L20

L51

L52

L5

L19

L11

L12

L17

L18

L19

L20

L51

L52

L5

L19

L11

L12

L17

L18

L19

L20

L51

L52

L5

L19

L11

L12

L17

L18

L19

L20

L51

L52

L5

L19

L11

L12

L17

L18

L19

L20

L51

L52

L5

L19

L11

L12

L17

L18

L19

L20

L51

L52

L5

L19

L11

L12

L17

L18

L19

L20

L51

L52

L5

L19

L11

L12

L17

L18

L19

L20

L51

L52

L5

L19

L11

L12

L17

L18

L19

L20

L51

L52

L5

L19

L11

L12

L17

L18

L19

L20

L51

L52

L5

L19

L11

L12

L17

L18

L19

L20

L51

L52

L5

L19

L11

L12

L17

L18

L19

L20

L51

L52

L5

L19

L11

L12

L17

L18

L19

L20

L51

L52

L5

L19

L11

L12

L17

L18

L19

L20

L51

L52

L5

L19

L11

L12

L17

L18

L19

L20

L51

L52

L5

L19

L11

L12

L17

L18

L19

L20

L51

L52

L5

L19

L11

L12

L17

L18

L19

L20

L51

L52

L5

L19

L11

L12

L17

L18

L19

L20

L51

L52

L5

L19

L11

L12

L17

L18

L19

L20

L51

L52

L5

L19

L11

L12

L17

L18

L19

L20

L51

L52

L5

L19

L11

L12

L17

L18

L19

L20

L51

L52

L5

L19

L11

L12

L17

L18

L19

L20

L51

L52

L5

L19

L11

L12

L17

L18

L19

L20

L51

L52

L5

L19

L11

L12

L17

L18

L19

L20

L51

L52

L5

L19

L11

L12

A-1072

A-36

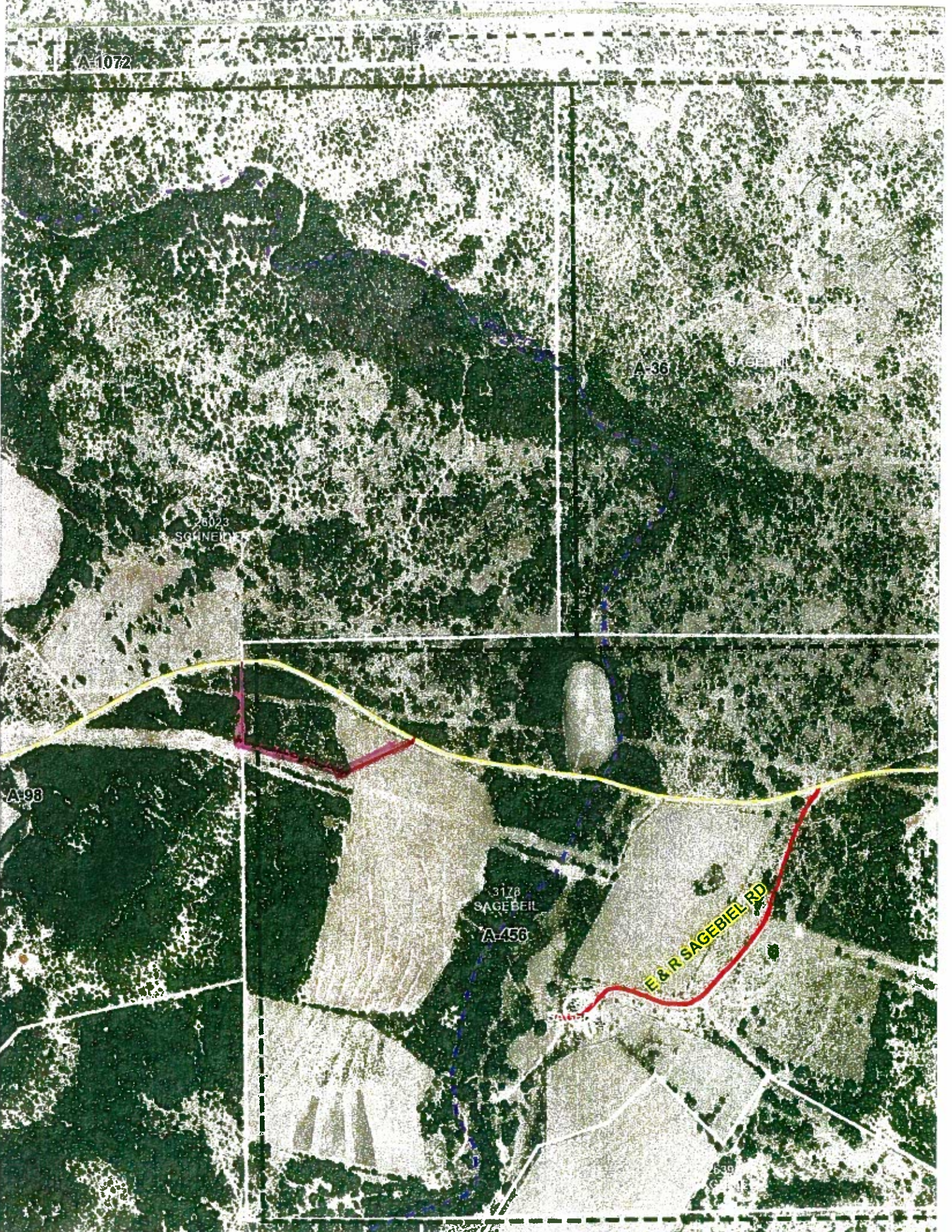
26023
SCHNEIDER

A-98

3176
SAGEBIEL

A-456

E & R SAGEBIEL RD



- 1) No commercial feedlots or commercial breeding of animals allowed.
- 2) No swine allowed. An exception is 4-H or FFA projects, which must be kept in a manner that is not offensive to neighbors in the area.
- 3) No abandoned vehicles or abandoned equipment of any kind shall be stored on the property.
- 4) In reference to mobile homes, a new doublewide is allowed. It must be skirted at set-up and kept in good condition at all times.
- 5) An older historic-type home may be moved onto the property only with prior approval from seller and/or his heirs.
- 6) Property shall be well maintained and kept clean at all times.